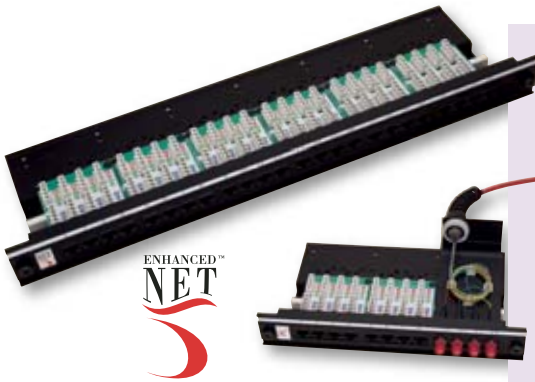


Modular Patch Panel



Features & Benefits

- ✘ Mix and Match Copper, Fibre and ISDN in one panel
- ✘ Suitable for Gigabit Ethernet applications
- ✘ Manufactured in the UK
- ✘ Easy and neat cable management
- ✘ Accept Connectix Cable Tidy Rings
- ✘ Fully QA tested

The Connectix Cabling System modular panel range not only provides exceptional performance for high speed copper LANs including Gigabit Ethernet applications, but has the added versatility of offering fibre and ISDN options. The flat modular design provides easier cable management and the high port density (up to 24 RJ45 ports in 1U) is ideal where cabinet space is at a premium.

The front of the panel features the same popular labelling method and cable ring slots as the other panels in the Connectix product range. These panels save the cost of an additional cable management tray, reduce installation time and facilitate neat, professional and well-managed cable routing.

Enhanced Category 5 high-density 4 way modules achieve optimum transmission performance by incorporating the highest quality components and innovative on-board compensation techniques. The extended PowerSum characteristics exceed the TIA/EIA-568-B specifications. When combined with Enhanced Category 5 modules and UTP cable the link will perform well in excess of the Enhanced Category 5 specification.

4 way ST and 2 Way SC fibre modules are also available, with gland hole compatible with Optix Opal assemblies. The fibre modules include a management tray complete with cable clips. A 4 way ISDN bus module is also available.

Blank modules may also be included to allow for future expansion.

Ordering Information

Product Description	Part Number
24 port RJ45 Enhanced Category 5 Modular Panel	009-001-001-50
Unloaded Modular Panel	009-001-040-20
4 Port RJ45 Enhanced Category 5 Module	009-001-040-05
4 Port ISDN Module	009-001-040-06
4 Port ST Module	009-001-040-08
2 Port SC Module	009-001-040-09
Blank Module	009-001-040-10

Specification

Width	19" (483mm)
Depth	140mm
Height	1U (44mm)
Material	Aluminium alloy 6063 HE9/50s to BS1474
Finish	Matt black polyester paint
Socket Labels	9mm numbered card with acetate cover
Cable Management	Improved cabling facility with individual cable tie positions to give controlled cable bending and access for left or right cable entry
Capacity	Any 6 modules or blanks (up to 24 way)
4 way Enhanced Category 5 Module	
IDC Labels	Colour coded to EIA 258A/568B
IDC Blocks	Industry Standard 4 way IDC's
Conforms to	TIA/EIA-568-B Enhanced Category 5 specification
Fibre Modules	
Connector Options	4 way ST or 2 way SC
Overall Depth	460mm
Gland Hole Size	21mm