

Features & Benefits

- ✘ Manufactured in the UK
- ✘ Make installations neater and more professional
- ✘ Prevent cable strain
- ✘ Finished in black to match panels



Ordering Information

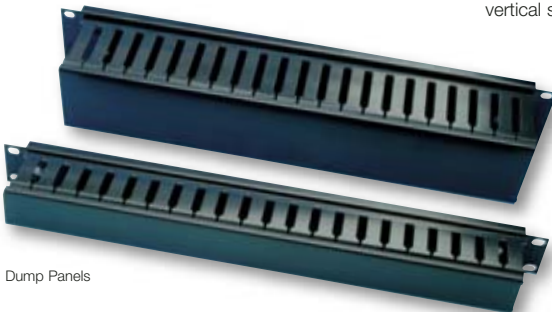
Product Description	Part Number
Cable Management Tray (Standard)	009-001-008-00
Cable Management Tray (High Density)	009-001-008-10
Cable tidy (4 ring)	009-001-007-00
Cable tidy (5 ring)	009-001-007-03
Brush Strip Panel	009-001-030-00
1U Dump Panel	009-001-009-11
2U Dump Panel	009-001-009-12

Cable Management Tray:

Cable management on Connectix Cabling System patch panels can be enhanced by the use of the cable management tray. The tray fits securely at the rear of any Connectix standard or high density patch panels, and provides additional cable tie positions to allow neat routing of cables from the back of the panel.

Jumper Ring Panels:

These provide rings to allow patch leads to be supported and prevented from obscuring other equipment. Connectix Cabling System jumper ring panels are available in two configurations; either four rings for horizontal support, or three for horizontal and two for vertical support.



Dump Panels