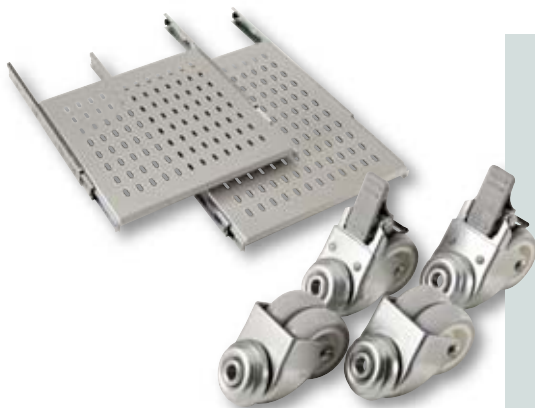


Cabinet Accessories



Features & Benefits

- ✕ All accessories colour match our range of cabinets
- ✕ Castors are available in 3 sizes, so will meet any requirements
- ✕ Baying kits allow up to 5 cabinets to be joined together

The Rax range of cabinet accessories complement the variety of floor standing and wall mounted cabinets. Combined together, these products offer a complete cable patching solution.

Heavy duty or lightweight castors and jacking feet can be fitted to raise the cabinet clear of the floor. Castors allow the cabinet to be moved across even surfaces and jacking feet level out unequal ground. Cage nuts are used to fix internal equipment into the cabinet. Baying kits and earth bonding kits enable two cabinets to be joined together. Grey painted steel plinths fit beneath the cabinet to allow cable access from the base, sides and rear and are available in various widths and depths. Shelves are available in three different formats: fixed, cantilever and telescopic. Cantilevers and fixed shelves are pressed steel, fitting horizontally between the uprights. Telescopic shelves operate a slide in-out feature.

Ordering Information

Product Description	Part Number
19" Cabinet baying kit	009-000-005-17
Jacking feet	009-000-005-04
Standard Castors (set of 4)	009-000-005-01
Medium Duty Castors (set of 4)	009-000-005-02
Heavy Duty Castors (set of 4)	009-000-005-03
Cage nuts (pk. of 50)	009-000-001-00
Earth bonding kit (set of 4)	009-000-005-28
Fixed Shelf 440mm deep	009-000-005-06
Fixed Shelf 570mm deep	009-000-022-46
Fixed Server Shelf 720 deep 50kg	009-000-018-05
Fixed Server Shelf 720 deep 100kg	009-001-018-10
Fixed Server Shelf 820 deep 50kg	009-000-018-20
Fixed Server Shelf 820 deep 100kg	009-000-018-25
Cantilever Shelf 190mm deep	009-000-020-01
Cantilever Shelf 300mm deep	009-000-020-02
Cantilever Shelf 500mm deep	009-000-020-03
Telescopic Shelf 440mm deep	009-000-005-22
Telescopic Shelf 570mm deep	009-000-005-23
Telescopic Server Shelf 720 deep 50kg	009-000-024-05
Telescopic Server Shelf 720 deep 100kg	009-000-024-10
Telescopic Server Shelf 820 deep 50kg	009-000-024-20
Telescopic Server Shelf 820 deep 100kg	009-000-024-25
Plinth 600 x 600mm	009-000-005-15
Plinth 600 x 780mm	009-000-005-16
Plinth 780 x 600mm	009-000-005-40
Plinth 780 x 780mm	009-000-005-41
Server Plinth 600 x 1040mm	009-000-129-05
Server Plinth 800 x 1040mm	009-000-129-10

